

ROOFANTENNA



Installation Instructions

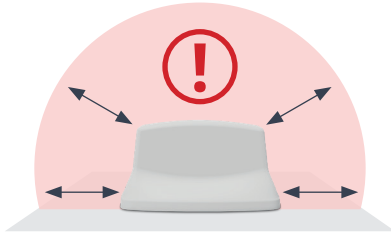
Installation Instructions

Recommended distances for the **ROOF ANTENNA** to the roof rails, roof windows, satellite antenna and PV system.

Recommended distances

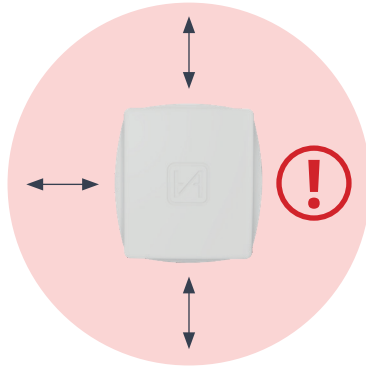
- Roof rails
- Awning
- Aluminum profiles
- Skylight
- Ventilation cover

! at least 50 cm



- SAT Antennas
- FM/DAB antennas
- DVB-T antennas

! at least 50 cm /
recommended 75 cm



- PV and solar system
- Storage box (metal or plastic)

! at least 75 cm /
recommended 100 cm

Installation on the Roof

The **ROOF ANTENNA** from the **CAMPERNET** set is intended for installation on the roof of a motorhome, panel van or caravan.

The installation and installation space instructions apply to both variants, whether with a side cable exit or with the antenna cables exit vertically downwards. For good reception, the **ROOF ANTENNA** must be placed as high as possible above the ground.



✓ Mounted on the roof, as high as possible above the ground.



✗ Do not install under the ceiling of the motorhome or caravan.



✗ Do not install on the side, front or back wall.

Metal, Plastic, Wood

Due to the unique antenna structure, the **ROOF ANTENNA** from the **CAMPERNET** set works on any surface described here. A metal plate under the **ROOF ANTENNA** is not necessary.

Application examples:

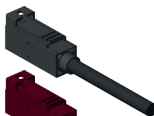
- Travel trailer
- Integrated motorhomes
- Semi-integrated motorhomes
- Box vans
- GRP roof



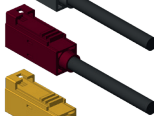
The installation of the ROOF ANTENNA is possible on all surfaces. No matter whether it is plastic/GRP, foam material like PU, EPS, XPS, wood or metal.

Antenna Cables

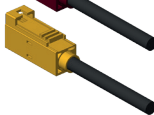
Code A, colour black / 5G diversity



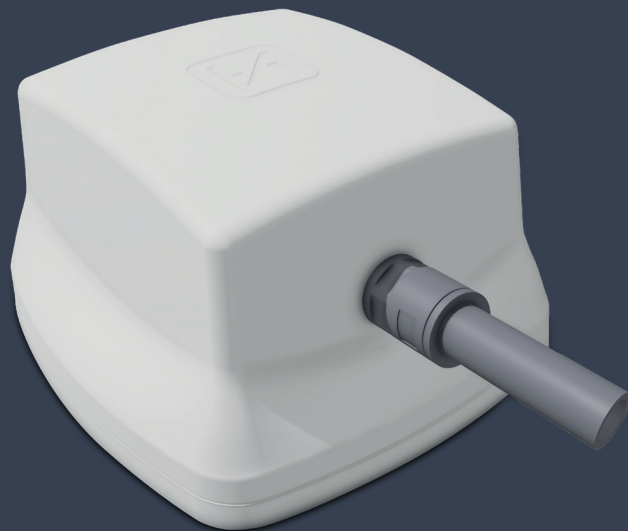
Code D, colour bordeaux / LTE + 5G



Code K, colour curry / WLAN 2.4 GHz, 5 GHz, 6 GHz



Extension of the antenna cable max. 5 m
Recommended cable type for extension: Leoni Dacar 302



Installation Instructions

Cable ducting sideways

ROOF ANTENNA – cable ducting sideways



1. Clean roof surface

Clean the mounting area of the motorhome or caravan with a dirt and grease-dissolving cleaner until the surface is clean. Do not use acid! Let the surface dry!
Applies to metal and GRP roofs.
For an appropriate cleaner, please contact your vehicle's manufacturer!



2. Clean adhesive surface

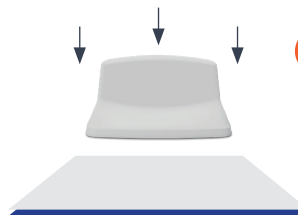
Clean the adhesive surface of the **ROOF ANTENNA** with a dirt and grease-dissolving cleaner. No acid! Let the surface dry!



3. Glue bead

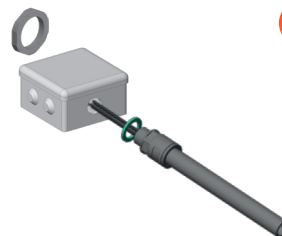
Apply two closed beads of adhesive to the underside of the **ROOF ANTENNA**. Excess glue collects in the circumferential groove.

ROOF ANTENNA – cable ducting sideways



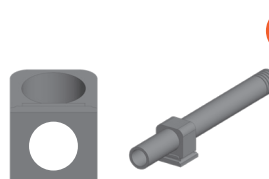
4. Place the antenna correctly

Place the **ROOF ANTENNA** with mounting adhesive on the roof and press firmly until the adhesive is evenly distributed. Applies to metal and GRP roofs.



5. Screw connection

Push the seal onto the screw connection. Thread the antenna cable through the roof duct. From the inside of the roof duct, secure the screw connection with the enclosed screw nut. Screw connection M20 / PG13.5



6. Hose holder

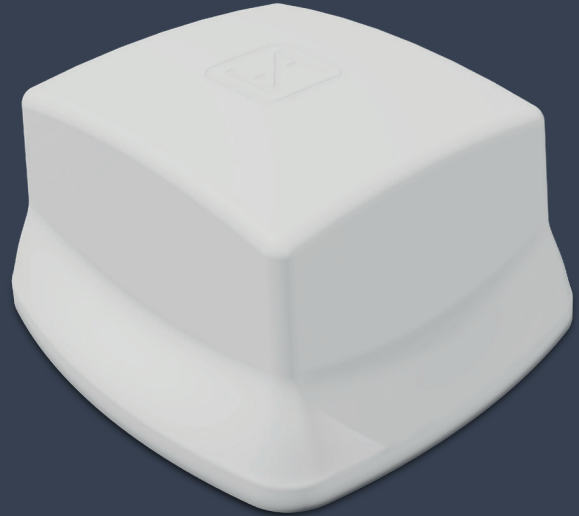
Apply assembly adhesive to the underside of the hose holder and press it onto the roof of the motorhome or caravan and wait until it has hardened.

ROOF ANTENNA - cable ducting sideways



7. Attach protective hose

Press the protective hose with the antenna cables into the hose holder and clip the lock onto it - now the installation is complete!!



Installation Instructions

cable ducting central

ROOF ANTENNA - cable ducting central

ⓘ Mounting on sheet metal



- 1. ROOF ANTENNA -hole pattern-**
ROOF ANTENNA with cable routing vertically downwards.
Drill diameter 24 mm.
Contact a specialist workshop!



- 2. Clean roof surface**
Clean the mounting area of the motorhome or caravan with a dirt and grease-dissolving cleaner until the surface is clean. Do not use acid! Let the surface dry!
For an appropriate cleaner, please contact your vehicle's manufacturer!



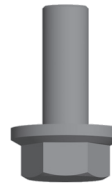
- 3. Clean adhesive surface**
Clean the adhesive surface of the **ROOF ANTENNA** with a dirt and grease-dissolving cleaner. Do not use acid!
Let the surface dry!

ROOF ANTENNA - cable ducting central

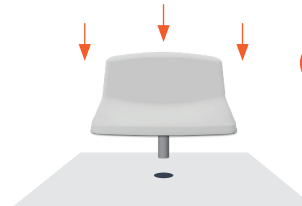
ⓘ Mounting on sheet metal



- 4. Glue bead**
Apply two closed beads of adhesive to the underside of the **ROOF ANTENNA**. Excess glue collects in the circumferential groove.
We recommend DEKALIN's or Sikaflex's assembly adhesives.



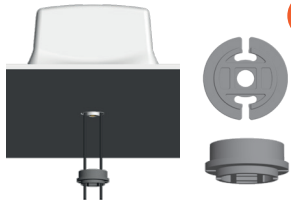
- 5. Screw**
A screw for sheet metal roofs is included to attach the **ROOF ANTENNA** until the mounting adhesive has hardened. It is screwed into **ROOF ANTENNA**'s brass sleeve.



- 6. Place the antenna correctly**
Thread the antenna cable through the hole in the roof. Place the antenna with mounting adhesive on the roof and press it firmly until the adhesive is evenly distributed.

ROOF ANTENNA - cable ducting central

⚠ Mounting on sheet metal



7. Attach the clamping piece

Push the antenna cables individually through the side grooves and snap them into the slots.



8. Press the clamping piece

Press the clamping piece into the roof opening. It provides abrasion protection for antenna cables.

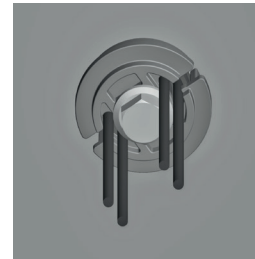


9. Screw

For sheet metal roofs, screw the enclosed screw from below through the clamping piece into the brass sleeve of the antenna and tighten it by hand (max. torque: 1 Nm).

ROOF ANTENNA - cable ducting central

⚠ Mounting on sheet metal

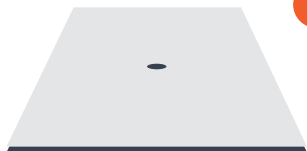


10. Completion of assembly

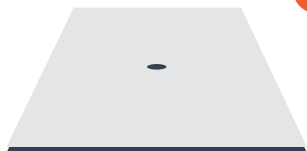
When further laying the antenna cable, the bending radius must **not be less than 15 mm**. Otherwise this will result in permanent damage to the antenna cables and a deterioration in the antenna range!

ROOF ANTENNA - cable ducting central

⚠ Assembly on multilayer



- 1. ROOF ANTENNA -hole pattern-**
ROOF ANTENNA with cable routing in the center, vertically downwards. Drill diameter 24 mm.
Contact a specialist workshop!



- 2. Clean roof surface**
Clean the mounting area of the motorhome or caravan with a dirt and grease-dissolving cleaner until the surface is clean. Do not use acid! Let the surface dry!
For an appropriate cleaner, please contact the vehicle's manufacturer!



- 3. Clean adhesive surface**
Clean the adhesive surface of the **ROOF ANTENNA** with a dirt and grease-dissolving cleaner. Do not use acid!
Let the surface dry!

ROOF ANTENNA - cable ducting central

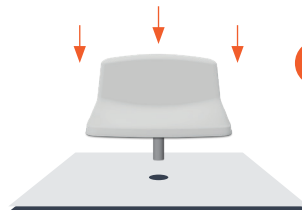
⚠ Assembly on multilayer



- 4. Glue bead**
Apply two closed beads of adhesive to the underside of the **ROOF ANTENNA**. Excess glue collects in the circumferential groove.
We recommend DEKALIN's or Sikaflex's assembly adhesives.



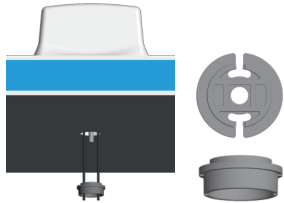
- 5. Screw in the threaded rod**
Screw the threaded rod with the short threaded piece into the brass sleeve of the **ROOF ANTENNA** as far as it will go.



- 6. Place the antenna correctly**
Thread the antenna cable through the hole in the roof, as well as the open end of the threaded rod. Place the antenna with mounting adhesive on the roof and press firmly until the adhesive is evenly distributed.

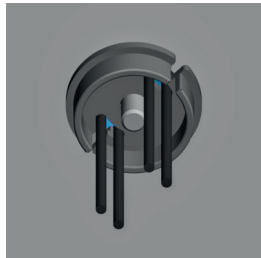
ROOF ANTENNA - cable ducting central

⚠ Assembly on multilayer



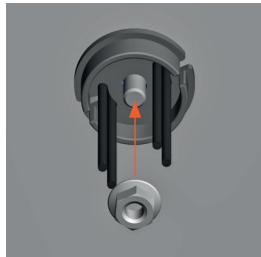
7. Attach the clamping piece

Push the antenna cables individually through the side grooves and snap them into the slots.



8. Press the clamping piece

Press the clamping piece into the roof opening. It provides abrasion protection for antenna cables.

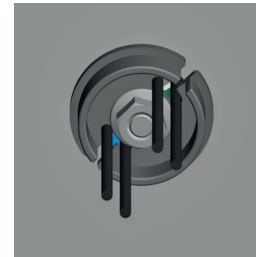


9. Screw nut

Screw the screw-nut onto the threaded rod and tighten them by hand (max. torque: 1 Nm).

ROOF ANTENNA - cable ducting central

⚠ Assembly on multilayer



10. Completion of assembly

When further laying the antenna cable, the bending radius must not be **less than 15 mm**. Otherwise this will result in permanent damage to the antenna cables and a deterioration in the antenna range!

ROOF ANTENNA 2x2 Data Sheet

cable ducting sideways

Electronics	Mobile frequencies	698 MHz to 960 MHz, 1424 MHz to 2170 MHz, 2490 MHz to 2690 MHz, 3200 MHz to 3900 MHz
	Cellular MIMO	2x2
	Mobile antenna gain	max. 5 dBi
	WiFi frequencies	2300 MHz to 2490 MHz, 5.15 GHz to 5.825 GHz, 5.925 GHz up to 6.425 GHz
	WiFi bands	1 to 14, 36 to 64, 100 to 140, 149 to 165
	WiFi MIMO	2x2
	WiFi antenna gain	max. 5 dBi
	Transmission power	max. 2 W
Mechanics	Antenna type	Passive Antenna
	Dimensions	173 x 161 x 98 mm ³ (L x W x H)
	Protective hose	1500 mm (S)
	Antenna cable	3000 mm (K)
	Mobile radio connection	2x FAKRA socket Code D Bordeaux
	WiFi radio connection	2x FAKRA socket Code K Curry
	Weight	600 g
	Temperature range	-40 °C to +85 °C
	Humidity	10 % to 90 % without condensate
	Protection class	IP68 (when installed)
	Cable entry	M20 / PG13.5
	Special feature	no electrically conductive ground surface necessary
	Fastening	UV-resistant assembly adhesive e.g. Sikaex, Dekalin (not included in the delivery)

WEEE No.: DE 50397397



ROOF ANTENNA 2x2 Data Sheet

cable ducting central

Electronics	Mobile frequencies	698 MHz to 960 MHz, 1424 MHz to 2170 MHz, 2490 MHz to 2690 MHz, 3200 MHz to 3900 MHz
	Cellular MIMO	2x2
	Mobile antenna gain	max. 5 dBi
	WiFi frequencies	2300 MHz to 2490 MHz, 5.15 GHz to 5.825 GHz, 5.925 GHz up to 6.425 GHz
	WiFi bands	1 to 14, 36 to 64, 100 to 140, 149 to 165
	WiFi MIMO	2x2
	WiFi antenna gain	max. 5 dBi
	Transmission power	max. 2 W
Mechanics	Antenna type	Passive Antenna
	Dimensions	173 x 161 x 98 mm ³ (L x W x H)
	Protective hose	-
	Antenna cable	1500 mm (K)
	Mobile radio connection	2x FAKRA socket Code D Bordeaux
	WiFi radio connection	2x FAKRA socket Code K Curry
	Weight	450 g
	Temperature range	-40 °C to +85 °C
	Humidity	10 % to 90 % without condensate
	Protection class	IP68 (when installed)
	Cable entry	minimum Ø 24 mm
	Special feature	no electrically conductive ground surface necessary
	Fastening	UV-resistant assembly adhesive e.g. Sikaex, Dekalin (not included in the delivery)

WEEE No.: DE 50397397



ROOF ANTENNA 4x4 Data Sheet

cable ducting sideways

Electronics	Mobile frequencies	698 MHz to 960 MHz, 1424 MHz to 2170 MHz, 2490 MHz to 2690 MHz, 3200 MHz to 3900 MHz
	Cellular MIMO	4x4
	Mobile antenna gain	max. 5 dBi
	WiFi frequencies	2300 MHz to 2490 MHz, 5.15 GHz to 5.825 GHz, 5.925 GHz up to 6.425 GHz
	WiFi bands	1 to 14, 36 to 64, 100 to 140, 149 to 165
	WiFi MIMO	2x2
	WiFi antenna gain	max. 5 dBi
	Transmission power	max. 2 W
	Antenna type	Passive Antenna
	Dimensions	173 x 161 x 98 mm ³ (L x W x H)
Mechanics	Protective hose	1500 mm (S)
	Antenna cable	3000 mm (K)
	Mobile radio connection	LTE: 2x FAKRA socket Code D Bordeaux 5G diversity: 2x FAKRA socket Code A Black
	WiFi radio connection	2x FAKRA socket Code K Curry
	Weight	700 g
	Temperature range	- 40 °C to + 85 °C
	Humidity	10 % to 90 % without condensate
	Protection class	IP68 (when installed)
	Cable entry	M20 / PG13.5
	Special feature	no electrically conductive ground surface necessary
Fastening	UV-resistant assembly adhesive e.g. Sikaex, Dekalin (not included in the delivery)	

ROOF ANTENNA 4x4 Data Sheet

cable ducting central

Electronics	Mobile frequencies	698 MHz to 960 MHz, 1424 MHz to 2170 MHz, 2490 MHz to 2690 MHz, 3200 MHz to 3900 MHz
	Cellular MIMO	4x4
	Mobile antenna gain	max. 5 dBi
	WiFi frequencies	2300 MHz to 2490 MHz, 5.15 GHz to 5.825 GHz, 5.925 GHz up to 6.425 GHz
	WiFi bands	1 to 14, 36 to 64, 100 to 140, 149 to 165
	WiFi MIMO	2x2
	WiFi antenna gain	max. 5 dBi
	Transmission power	max. 2 W
	Antenna type	Passive Antenna
	Dimensions	173 x 161 x 98 mm ³ (L x W x H)
Mechanics	Protective hose	-
	Antenna cable	1500 mm (K)
	Mobile radio connection	LTE: 2x FAKRA socket Code D Bordeaux 5G diversity: 2x FAKRA socket Code A Black
	WiFi radio connection	2x FAKRA socket Code K Curry
	Weight	550 g
	Temperature range	- 40 °C to + 85 °C
	Humidity	10 % to 90 % without condensate
	Protection class	IP68 (when installed)
	Cable entry	minimum Ø 24 mm
	Special feature	no electrically conductive ground surface necessary
Fastening	UV-resistant assembly adhesive e.g. Sikaex, Dekalin (not included in the delivery)	

Service

More information can be found here:
www.antretter-huber.com/service

If you have any questions, please contact us at:
service@antretter-huber.com

Stay in touch with us:



[facebook.com/AntretterundHuber](https://www.facebook.com/AntretterundHuber)



[instagram.com/antretterundhuber](https://www.instagram.com/antretterundhuber)



[youtube.com/@antretterhuber831](https://www.youtube.com/@antretterhuber831)

Thank you for choosing our product.
We hope you enjoy it.





Antretter & Huber GmbH
Irsham 55
94081 Fürstenzell
www.antretter-huber.com